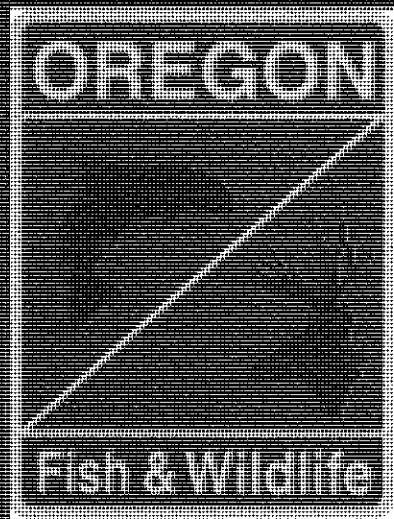


Oregon Wolf Conservation & Management

ODFW Commission
October 10, 2014



Russ Morgan

Ron Anglin

Oregon Dept. of Fish & Wildlife

Overview

Potential for Delisting
Wolves in Oregon

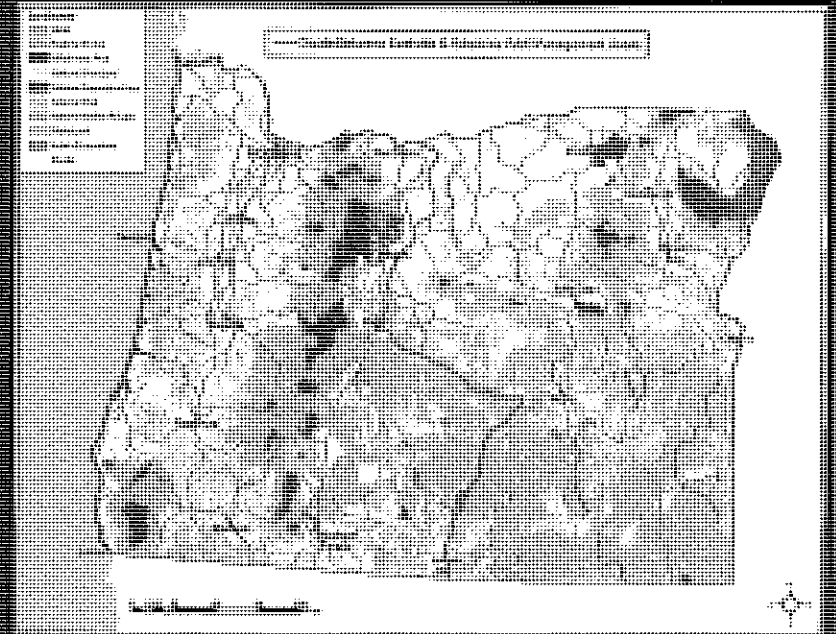
Wolf Plan Evaluation

Release of Wolf
Location Data



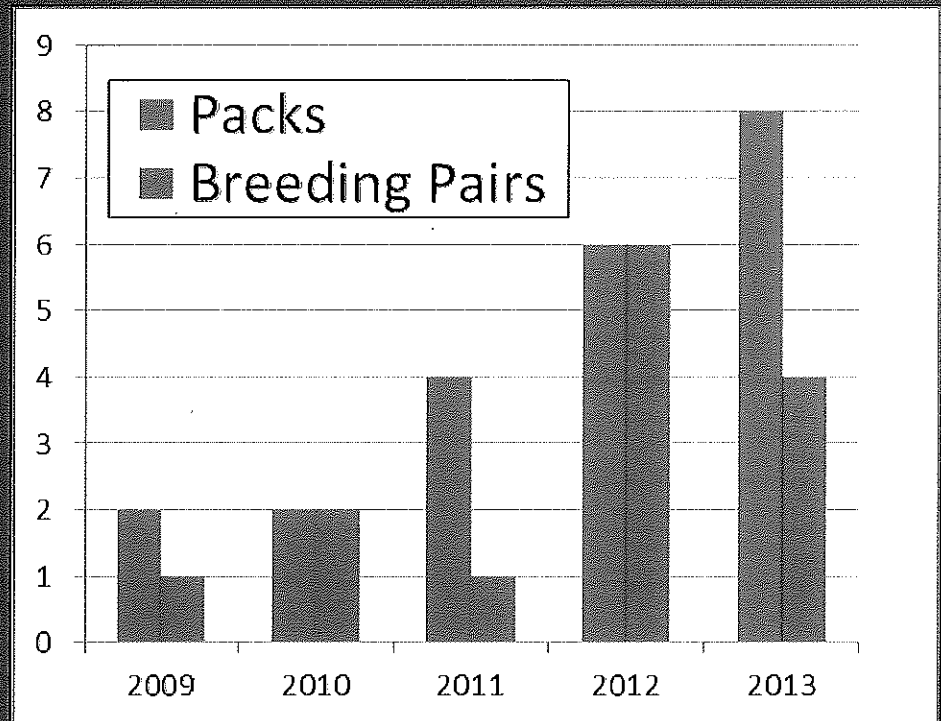
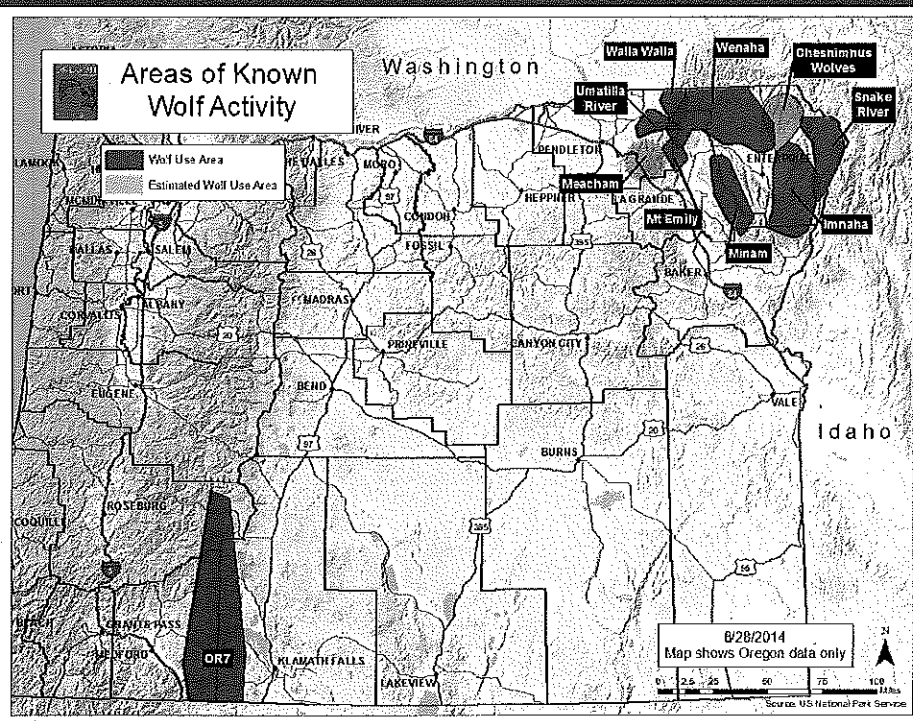
Issue 1: Delisting

- Wolf Plan was built using a phased approach; Phase I is known as the “Conservation Phase”
- The Conservation population objective is 4 breeding pairs in eastern Oregon for 3 consecutive years
- Plan: *“Once the conservation population objective is achieved the process to consider delisting will be initiated”*



Oregon Wolf Population

- To date in 2014, we have documented reproduction in 8 packs in eastern Oregon.
- Pup counts are not complete, but likely that 4 breeding pairs will be counted in 2014



Oregon ESA Delisting Criteria

- The species is not now (and is not likely in the foreseeable future to be) in danger of extinction in any significant portion of its range in Oregon, and
- The species natural reproductive potential is not in danger of failure, and
- Most populations are not undergoing imminent or active deterioration of range or primary habitat; and
- Over-utilization of the species or its habitat for commercial, recreational, scientific, or educational purposes is not occurring or likely to occur; and
- Existing state or federal programs or regulations are adequate to protect the species and its habitat.

Initial Actions

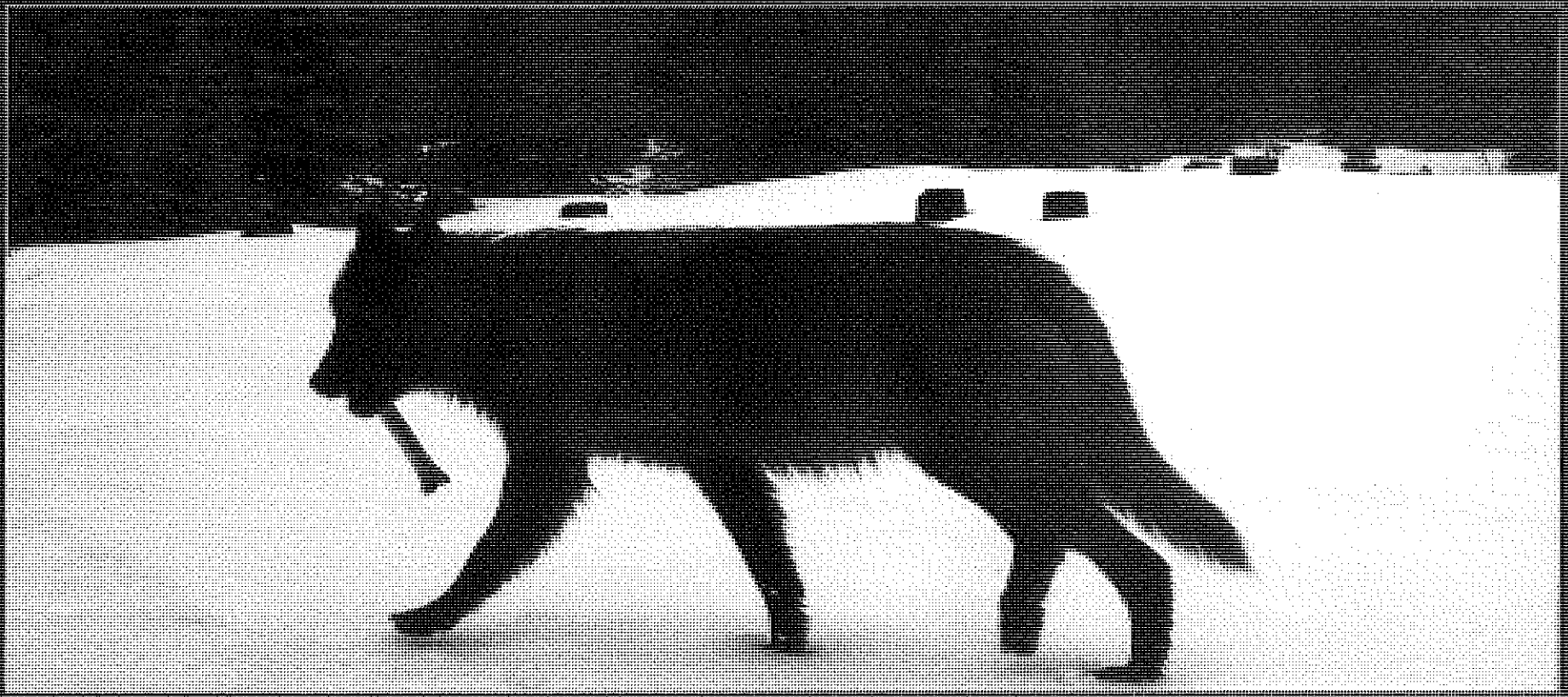
- Winter pup counts
- Review available scientific information
- Analyze the best science available and evaluate findings using ESA delisting criteria
- Establish timeline to complete the process



Proposed Timeline

(if 2014 conservation objective is met)

- April, 2015 – staff delisting proposal (no decision)
- May or June, 2015 – revised proposal (potential decision)



Issue 2: Wolf Plan Evaluation

- Current wolf plan adopted in October 2010
- Next scheduled evaluation is 2015 – same year as potential delisting

Both process are expected to receive high levels of public interest and input

Both processes will require extensive analysis

Will involve multiple Commission meetings and extensive staff resources to complete

- Much of the Plan is based on State ESA listed status

Recommendation

- Staff proposes to initiate plan evaluation process after the ESA status is determined
- Expected to be fall of 2015, and will likely extend into 2016
- This recommendation is intended to:
 - Improve planning efficiency by focusing effort on actual status of wolves at the time
 - May result in plan simplification
 - Spread workloads for both processes so that necessary management activities are still conducted

Issue 3: Point-location wolf data

- Wolf Plan: *“Provide wolf monitoring information to landowners, livestock producers and the public as needed to keep them informed of wolf activities and movements”*
- Since 2010, the department has provided regular wolf monitoring information to livestock producers

2010 Wolf Notification

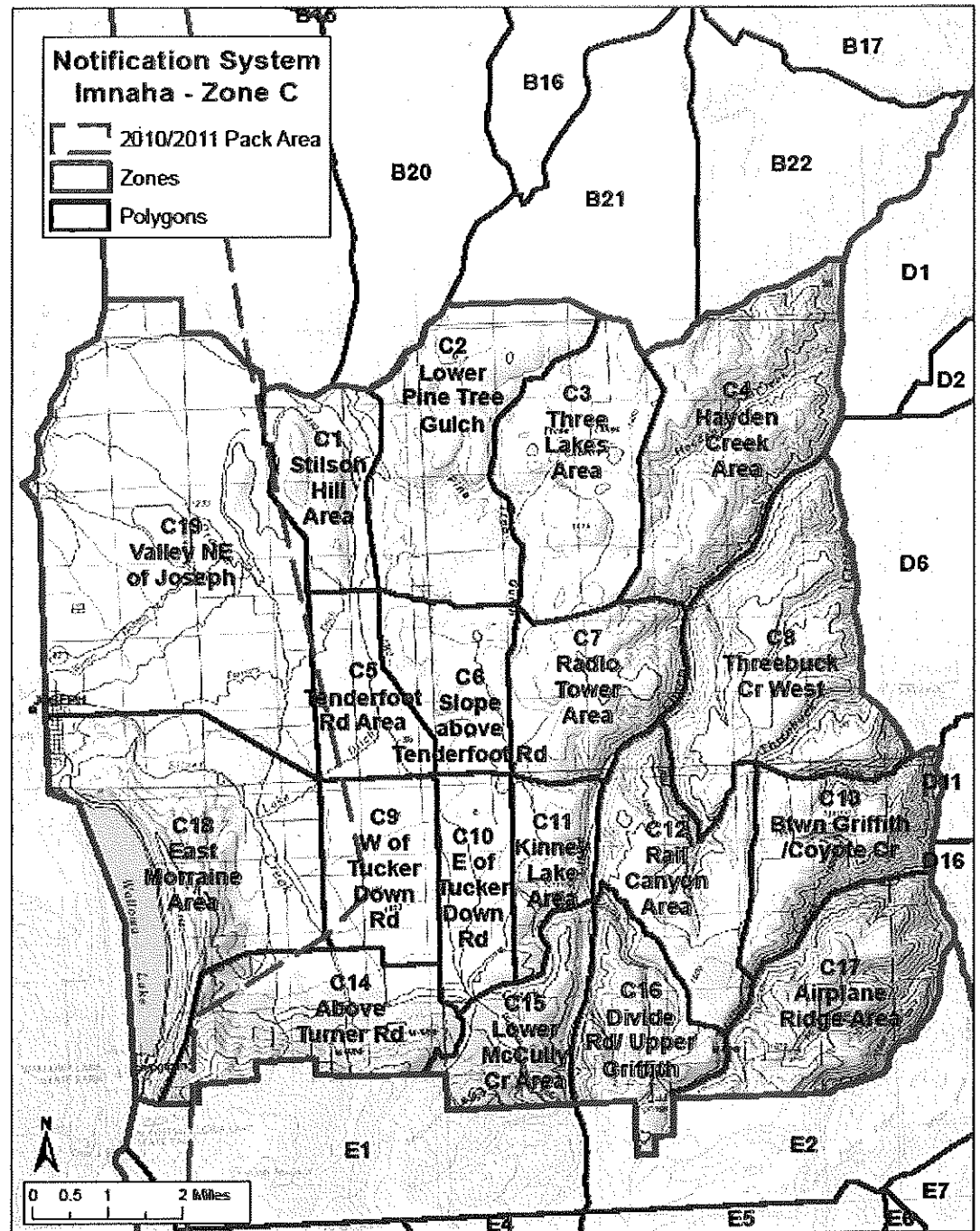
- Once-per-week maps viewed by area ranchers
- Den/rendezvous data was redacted
- Data could only be viewed at ODFW office – hard copy only, no copying, or other distribution
- Labor intensive, and required ranchers to come to office.
- One depredating pack at that time (Imnaha)

2011 Wolf Notification

- In addition to map, department staff began texting wolf location information to Innaha Pack producers
- @5000 text messages sent by staff – 7 days per week
- Increasing wolf population made this method unsustainable

2012

- Automated system
- Notification is made daily by text or email
- No point data – data is placed into predefined polygons known to the producers



Example Text Messages

*OR14 – 6/21 06am B2 Pine Creek, 6/21
12am B6 Upper Wildhorse Rd, 6/20
06pm B7 Narkus, 6/20 12pm B3 Rock
Creek*

*No satellite download on OR25 was
received, so no new information is
available regarding OR25's location*

Automated Notification System

- First of its kind in US wolf management
- A more efficient way to get information to many producers regarding wolf presence
 - 83,000 messages to 108 producers in 3 counties in 2013
- Daily downloads immediately distributed
- Balances overall conservation needs with needs of producers
- Generally received favorably by producers

Questions?





Washington System

- Similar to Oregon – developed a unique GIS-based system
- Point-location data available to some producers by specific agreement and user password
- Relatively low participation – currently only 8 producers w/ access to data
- Limited data available from June 1 – Dec 31, and passwords changed regularly
- Requires GIS personnel resources and significant explanation of regulatory requirements to producers